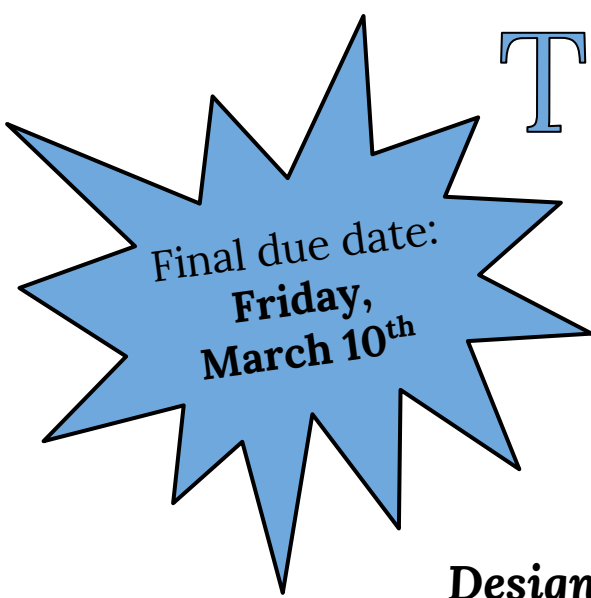
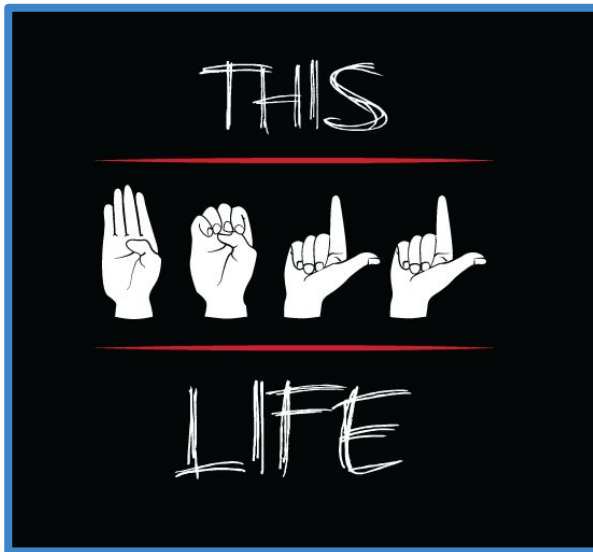


# This Bell Life

## T-Shirt Order Form



*Design detail*



Adult v-necks and youth crew-necks are available in the following sizes:

**Youth Sizes:** XS S M L XL    **Adult Sizes:** XS S M L XL XXL

**Name:** \_\_\_\_\_ **Room #:** \_\_\_\_\_

Item	XS	S	M	L	XL	XXL	Quantity	Subtotal (\$)
<b>Youth T-shirt</b> <small>(crew-neck)</small>						n/a	× \$15	
<b>Adult T-shirt</b> <small>(v-neck)</small>							× \$15	

Please indicate the quantity of each size you wish to purchase.  
Cash or checks made out to "Bell School" are accepted.

<b>TOTAL</b>	
--------------	--

**All orders due by Friday, March 10<sup>th</sup>. T-shirts will be delivered in mid-to-late March.**